

SOUTH WEST PARTNERSHIP FORUM NEWS

South England Engagement Team Newsletter

September 2016

Developing our South West Partnership Approach to Sustainability and Transformation Plans

At a South West Social Partnership Forum meeting held on 23 June 2016 a national and regional overview was given by colleagues from NHS England and Northern Devon Healthcare. A proposal for staff side engagement, taking on board the points raised around capacity, timeliness and including a recommendation from the RSPF to STPs to adopt proposal is currently being developed and will be shared

Health Education England – Workforce Data and Workforce Modelling – Workforce Issues

Clare Hines, HEE SW shared that various modelling and planning tools are in place to bring to STPs locally. Workshops will be held from July to September to promote the tools. HEE had undertaken a horizon scan for what STPs may need in terms of support.

In This

Issue

- [Update](#)
- [Coming Up](#)
- [HPMA Awards](#)
- [SPF Website Link](#)
- [Contacts](#)



social
partnership
forum



HPMA AWARDS 2016



Adobe Acrobat
Document

**Link to
HPMA
winners
guide**

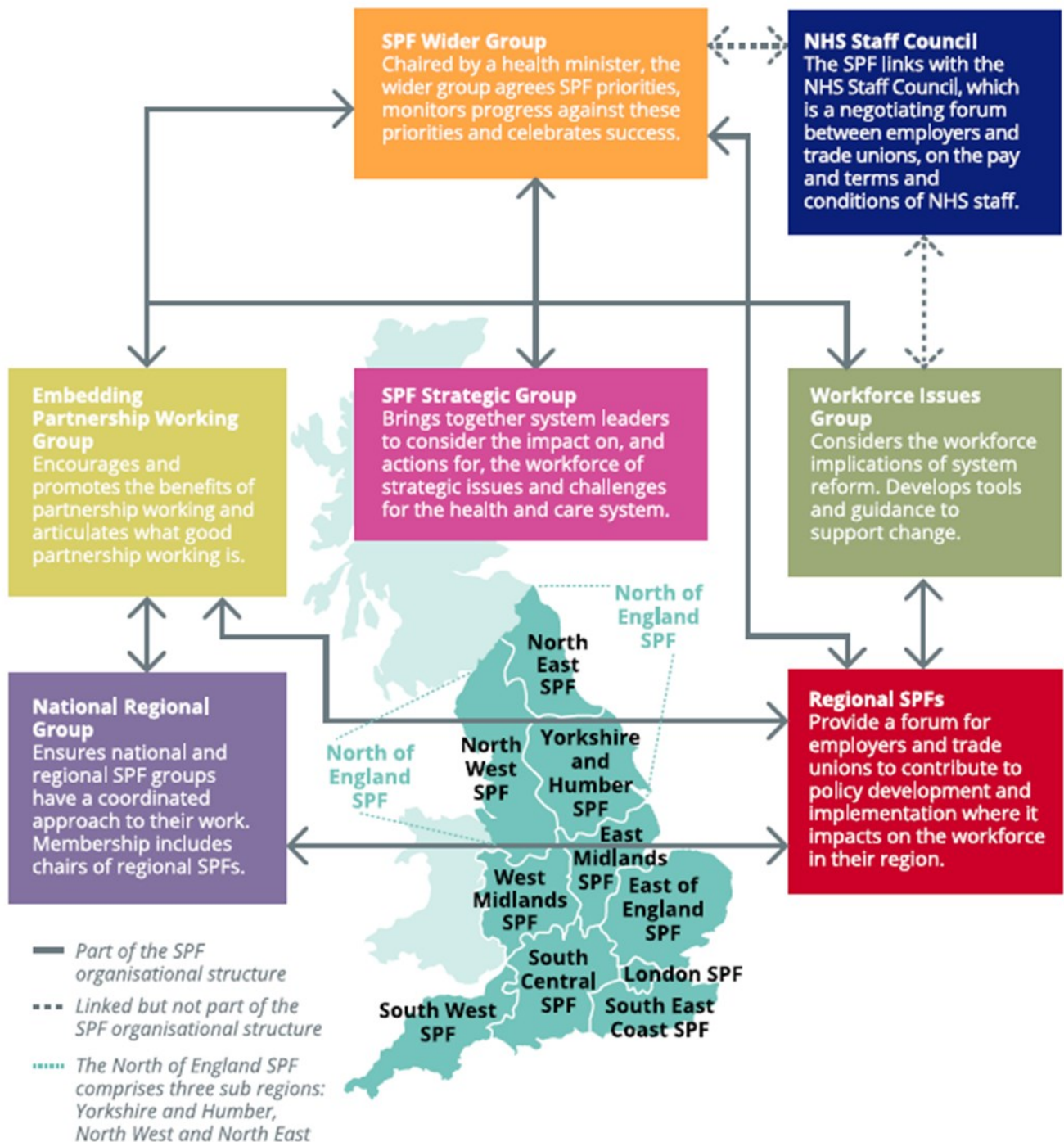
Coming Up

13 September SW HRD/RSPF Meeting – Focus on Devolution

DevoManc colleagues from management and staff side will attend to present their perspectives. Colleagues from DevoCornwall will also share their experiences and intelligence.

Promoting partnership working in the NHS

The SPF brings together NHS Employers, NHS trade unions, NHS England, Health Education England and the Department of Health to discuss and debate the development and implications of workforce policy.



Documents and links: National SPF

<http://www.socialpartnershipforum.org/>

Contact Us

engagementsouth@nhsemployers.org

Liz Gambrell – Area Head of Engagement, South
liz.gambrell@nhsemployers.org.uk – 07880 738616
Jenny Hawkins – Senior Engagement Support Officer
jenny.hawkins@nhsemployers.org – 07568 108489

